

PHILATELIC OPPORTUNITIES WITH GAMBIA



Presented By

Gary Wayne Loew, ECMP^P

*Hamilton Township
Philatelic Society*

Agenda

- The Nation of Gambia
- The First Stamps of Queen Victoria
- The Stamps of Edward VII
- The Stamps of George V
- The Stamps of George VI
- Postal History of the River Villages and Towns —
Marcophily & Routes
- Gambia's Role in Aerophilately
- Modern Philatelic, um, "Opportunities"



The Nation of Gambia

- Geography
 - Maps & Boundaries
 - Key Postal Villages
- History
 - Early explorers
 - The 1870 negotiations with France
- Economy
 - Slavery
 - Ground Nuts, Beaches & Eco-tourism



The Nation of Gambia - Geography



The Nation of Gambia - Geography



The Nation of Gambia - Geography

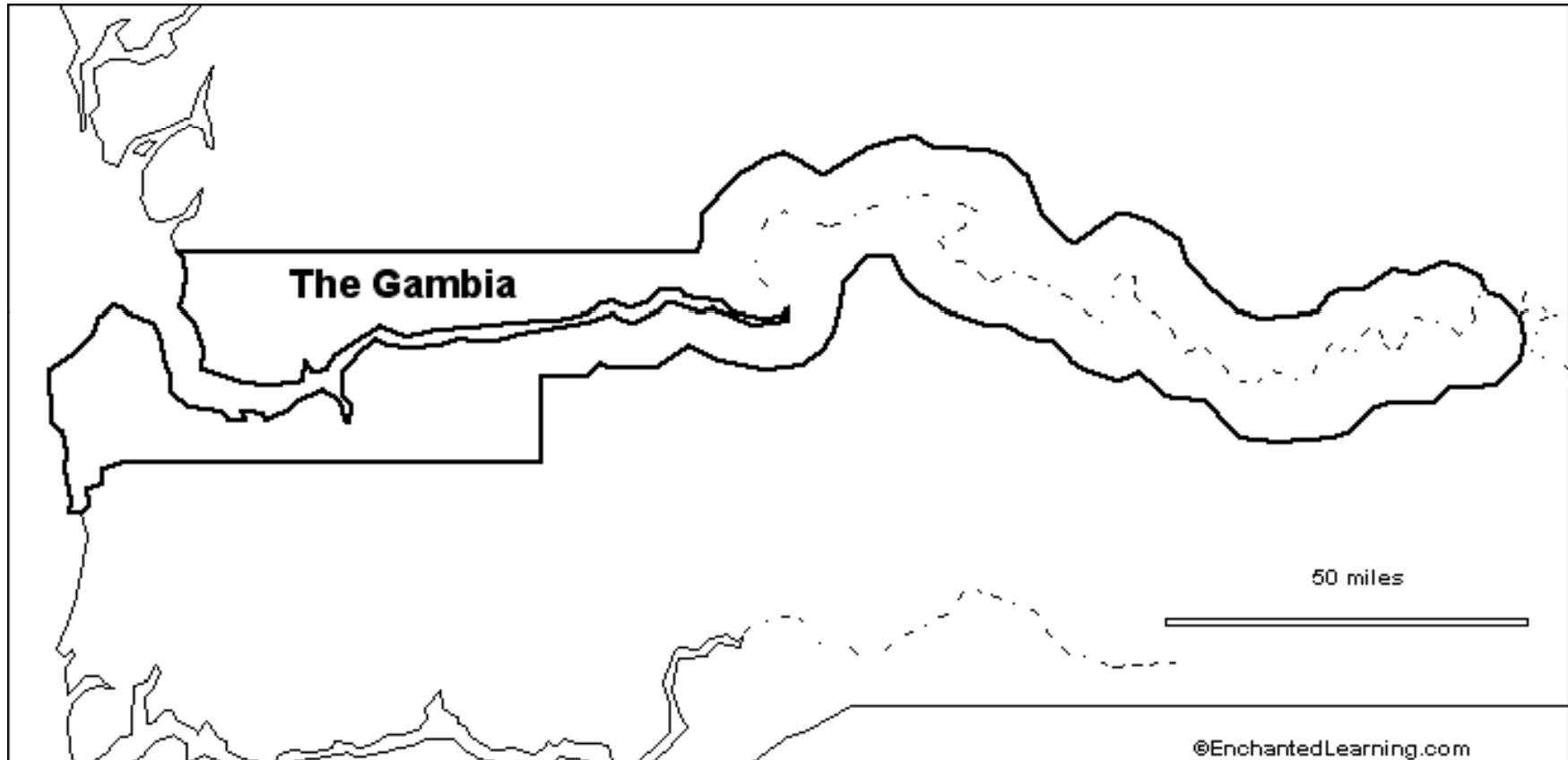


The Nation of Gambia – Postal Villages

- A. Bathurst
- B. Bansang
- C. Barra
- D. Basse
- E. Brikama
- F. Bwiam
- G. Cape St. Mary (Bakau)
- H. Farafenni
- I. Fattoto
- J. Georgetown
- K. Macarthy Island
- L. Gunjur
- M. Half-Die
- N. James Island
- O. Jessadi
- P. Jowara (Jawarra)
- Q. Karantaba
- R. Kaur (Kau-ur, Kaour)
- S. Kerewan
- T. Kunta-Ur
- U. Mansa Konko
- V. Serekunda
- W. Soldier Town
- X. Yundum



The Nation of Gambia – Postal Villages



The Nation of Gambia – History

Early Explorations

- Portuguese (1455)
- Italians (1500s)
- British (1600s)
- French (1600s)

Mungo Park (1803 & 1805)

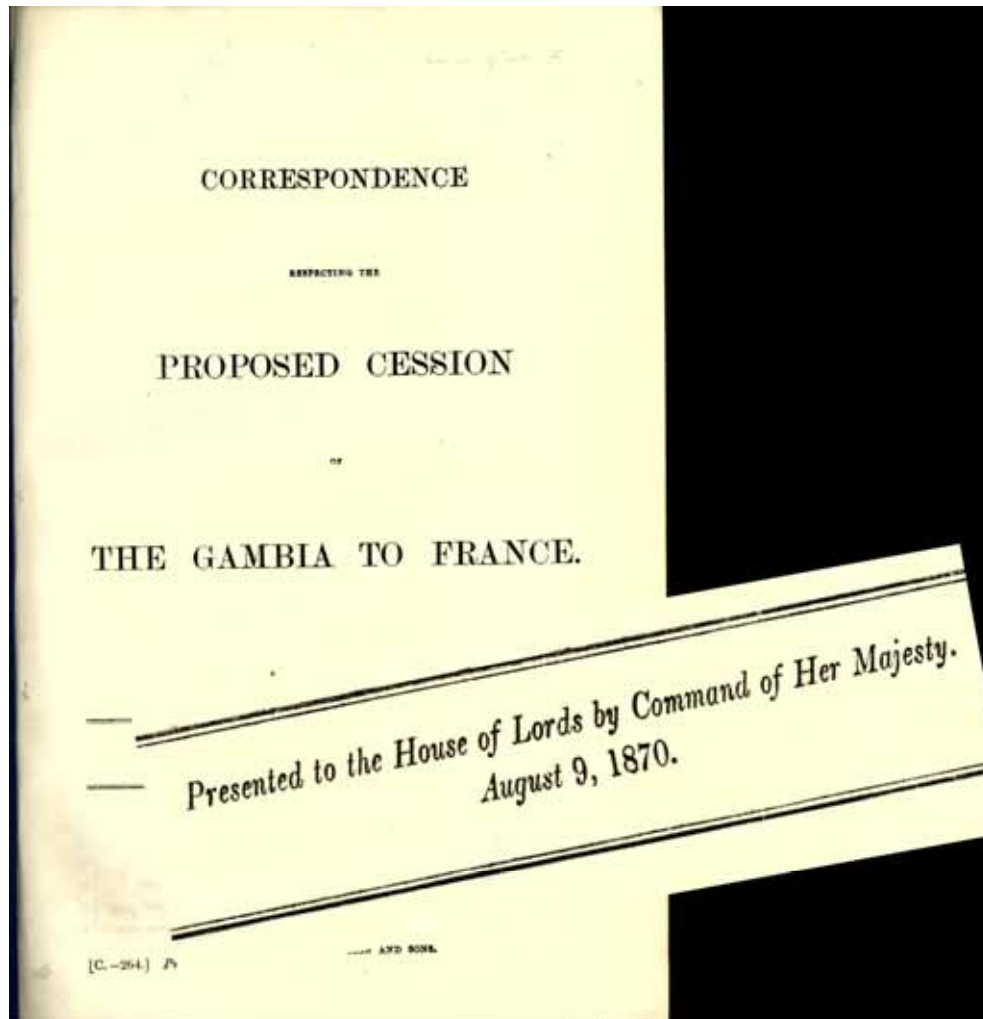


Popular Reading in late 1800s



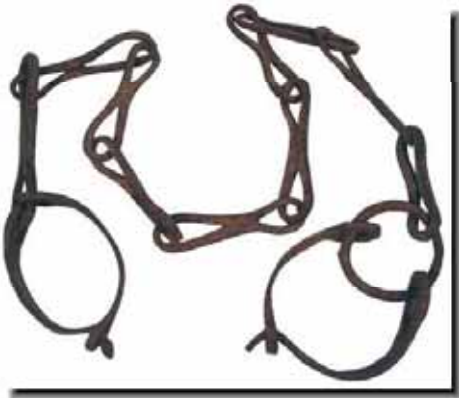
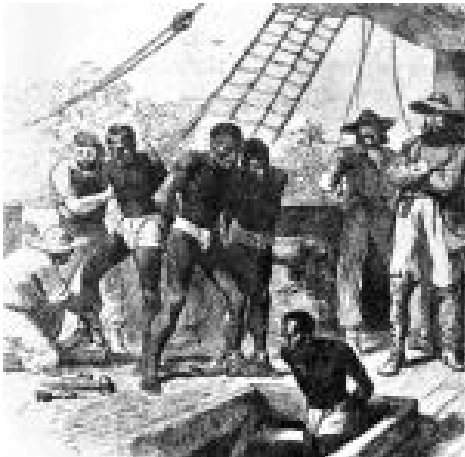
The Nation of Gambia – History

Almost Giving Up?



The Nation of Gambia – Economy

Early Trade - Slavery



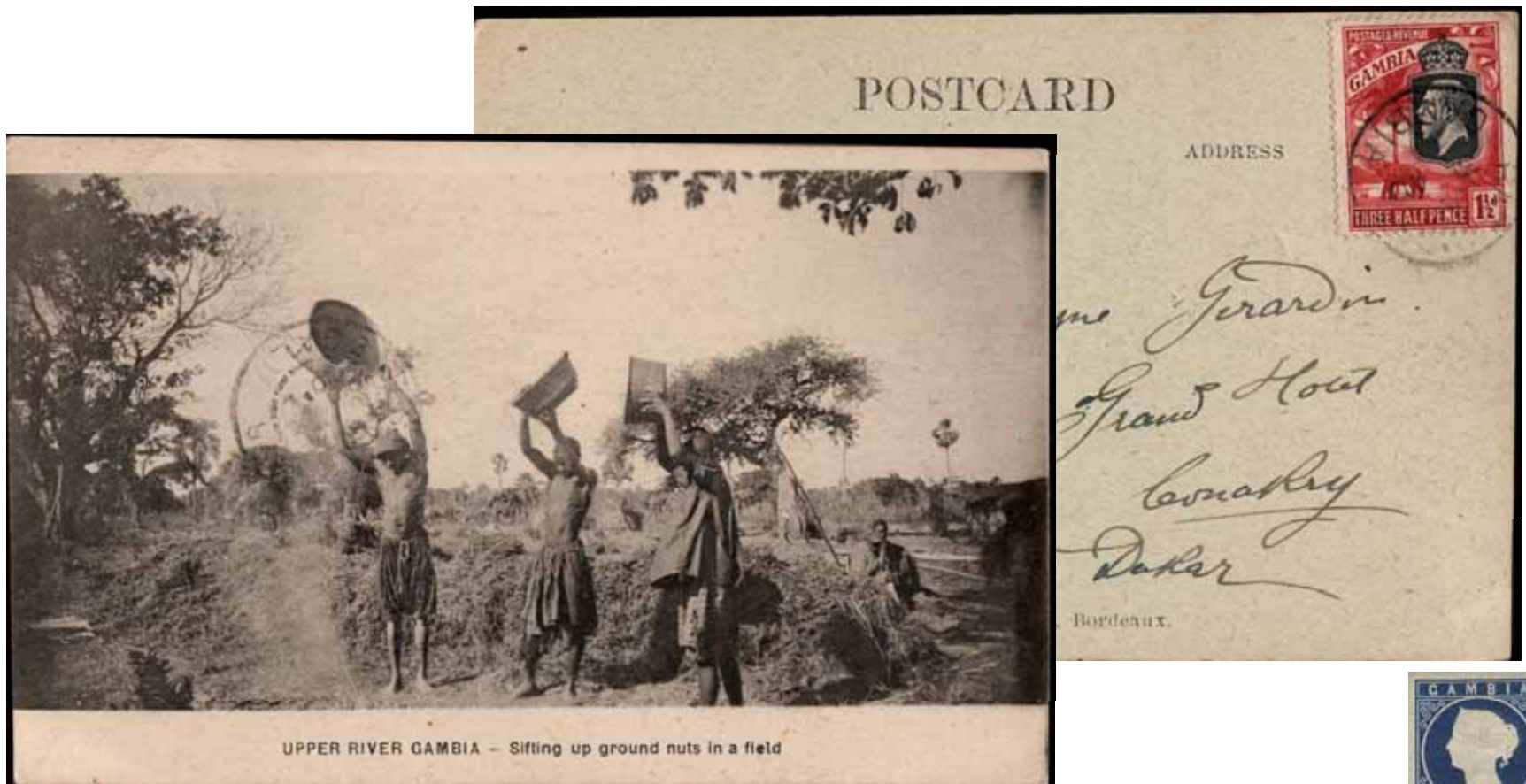
Modern Economy

- Ground Nuts
- Beaches
- Eco-tourism



The Nation of Gambia – Economy

Ground Nut Harvest



The First Stamps of Queen Victoria

The Negotiations with de La Rue

- 1867 Gambia Administrator requests stamps
- 1868 Colonial Office budgeted £100 for plates
- 1868 de La Rue requests £270
- 1869 de La Rue “caves in” at £75



The First Stamps of Queen Victoria

The Cameo Issue 1869-72

4d Brown



SG1 (Sc. 1a) Unwatermarked

6d Blue



SG3a (Sc. 2a) Unwatermarked



The First Stamps of Queen Victoria

Miniature Sheet of 15 - SG 21 1886-93

Crown CA Sideways (Crown to Left of CA)



Perf Comb Down



The First Stamps of Queen Victoria

Miniature Sheet of 15 - SG 25 1886-93



Perf Comb Down – Overlapping Combs



The First Stamps of Queen Victoria

Miniature Sheet of 15 - SG 27 1886-93



Perf Comb Up



The First Stamps of Queen Victoria

Miniature Sheet of 15 - SG 28 1886-93



Perf Comb Down – Misperf Left Margin



The First Stamps of Queen Victoria

Key Plates of 1898-1902



SG 37-44



The First Stamps of Queen Victoria

Varieties

Color Studies



SG 35 (Violet) & 36 (Deep Violet)



The First Stamps of Queen Victoria Varieties

Sloping Frame – Left



SG 18B, 18Bc

Sloping Frame – Right



SG 17Bc



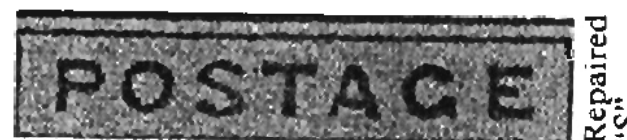
The First Stamps of Queen Victoria Varieties

Malformed "S"



SG 44a

Repaired "S"



Repaired
"S"



Malformed
"S"



Normal



Stamps of Edward VII

Key Plates of 1902-1905



SG 45-56



Stamps of Edward VII

The Overprint "Story" of 1906



SG69-I



SG69-II



SG 70a



Stamps of Edward VII

Key Plates of 1909



SG 72-85



Stamps of Edward VII

Dented Frame ("Glover" Flaw)



SG 57a 59a 60b 63a 65a

Slotted Frame (Maisel Discovery)



Stamps of George V

Key Plates of 1912-1922



SG 93 96 97 102



Stamps of George V

Key Plates Color Varieties



Pale sage-green Deep sage-green
& Carmine

SG 96 96a

Key Plates Paper Varieties



Purple on *yellow* Purple on *Orange-Buff*

SG91 91b



Stamps of George V

Key Plates Split "A" Variety



SG 92d



Stamps of George V

Portrait & Shield – Elephants of 1922-1929



SG 124s 127-128s 130-133s 137-138s



Stamps of George V

Portrait & Shield – Elephants of 1922-1929 Printing Errors



SG 122var

134var



Stamps of George V

Silver Jubilee Issue of 1935



SG 143-146



Stamps of George V

Silver Jubilee Issue of 1935

Stanley Gibbons Printing Errors



Extra Short
Flagstaff
Lightening

Flagstaff
R.H. Turret

SG 143d 144b 145c



Stamps of George V Silver Jubilee Issue of 1935 Non-Gibbons Printing Errors



SG 143, 146



Stamps of George VI

Elephant & Badge Issue of 1938-1946



SG 152b 153 161



Postal Villages and Towns Marcophily & Routes

The Up River Villages - Jessadi



Only Known Strike of this Village CDS on Cover



Postal Villages and Towns Marcophily & Routes

The Up River Villages

Bathurst "Wireless" CDS

Georgetown "Wireless" CDS



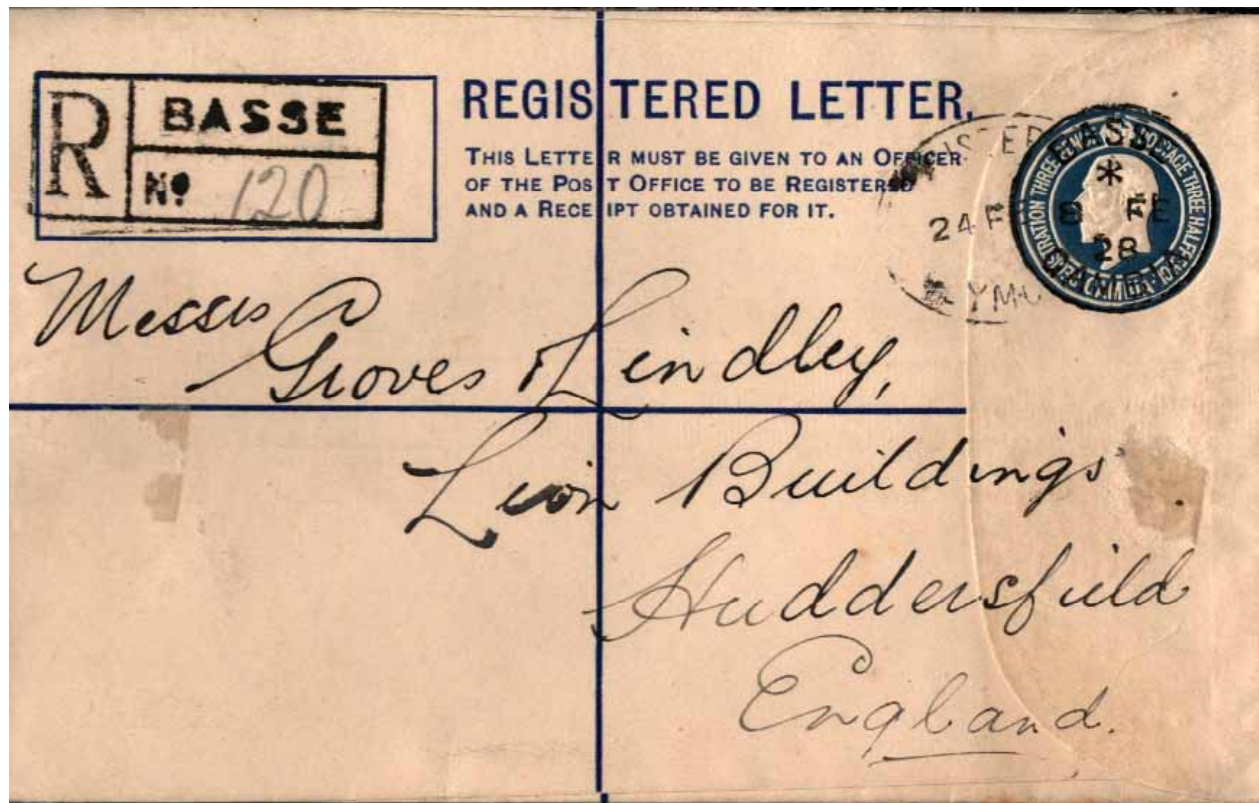
Jawarra CDs

Karantaba CDS



Postal Villages and Towns Marcophily & Routes

The Up River Villages - Basse



One of 3 Known Uses of Registered Stationery from Basse



Postal Villages and Towns Marcophily & Routes

The Up River Villages – Cape St. Mary



Lakeside Bible House



Postal Villages and Towns Marcophily & Routes

The Up River Villages – Macarthy Island



“Madame Joseph” Forgeries



Postal Villages and Towns Marcophily & Routes

World's Only Exclusively River-Based Traveling Post Office
(TDO)



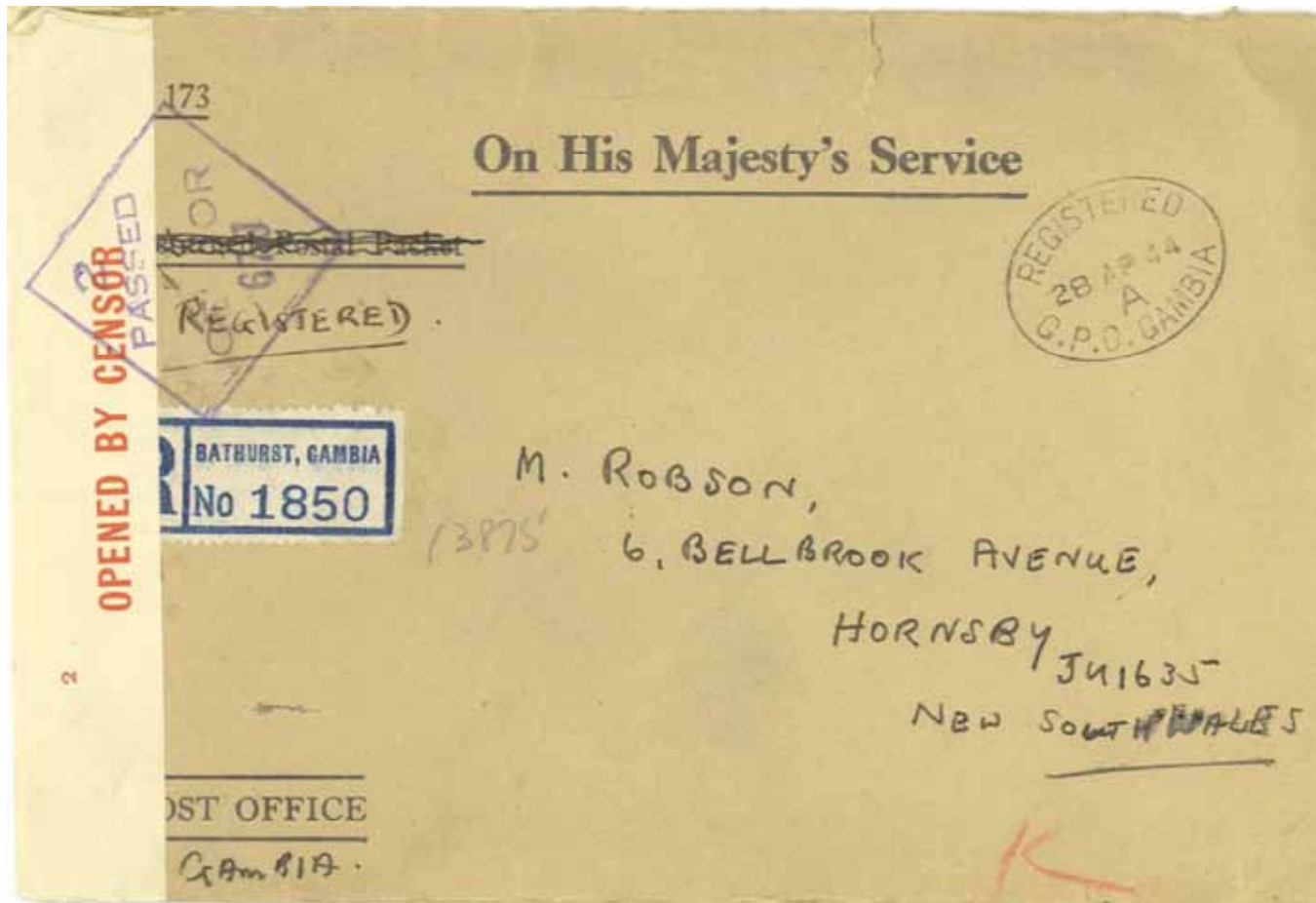
Postal Villages and Towns Marcophily & Routes

Bathurst & Censored Mail



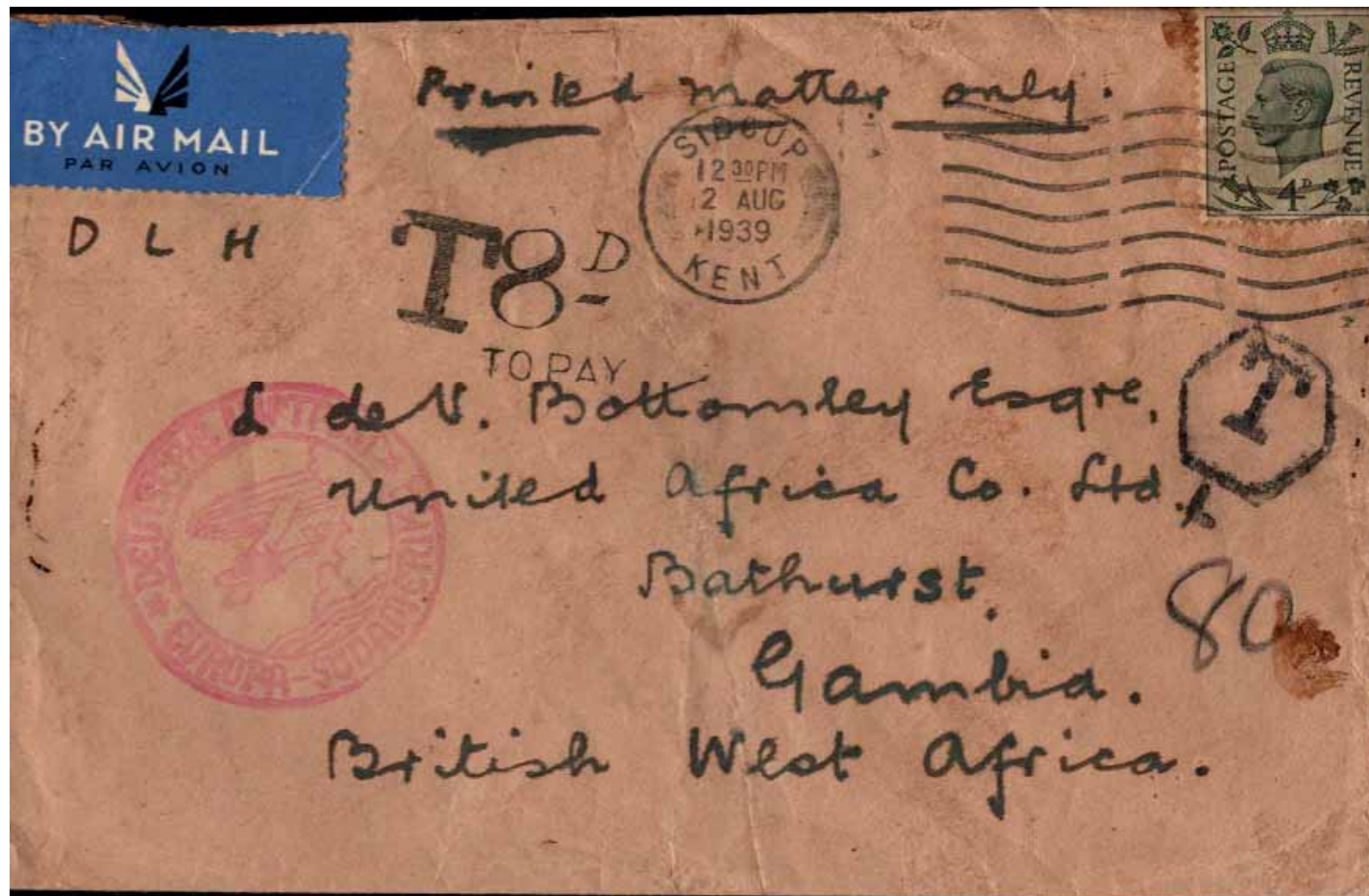
Postal Villages and Towns Marcophily & Routes

Bathurst & Censored Mail



Postal Villages and Towns Marcophily & Routes

Postage Due Markings



Postal Villages and Towns Marcophily & Routes

Postage Due Markings



Postal Villages and Towns Marcophily & Routes

Ships Mail & Paquebots



Gambia's Role in Aerophilately

Early French Routes

RECEPISSÉ N°517-2
(Dé. 1923.)
-Sp. 616a

remetteur ou déposant.

248

à l'adresse du destinataire

Autres

Rue n°

Bathurst

Nature de l'objet : *Imprimé - Avion*

Valeur déclarée (1) :

Remboursement :

Poids :

(1) Voir notice spéciale en verso
(2) Coller ici l'étiquette grise avec
étoile de 518.

Signature
de l'agent

IDEAL-BOULE
POUR
RAVIVER LES COULEURS



Paris – Casablanca – Dakar – Bathurst & Returned



Gambia's Role in Aerophilately

Early French Routes



Bathurst – Dakar – Toulouse - Scotland



Gambia's Role in Aerophilately

Early German Routes



Gambia's Centrality to European/South American Routes

Condor – Zeppelin Mail



São Paulo Brazil - Bathurst – Friedrichshafen - Bulgaria



Gambia's Centrality to European/South American Routes

Condor – DLH – Zeppelin Mail



Argentina - Bathurst – Friedrichshafen - Zurich



Gambia's Centrality to Other Routes



DESPATCHED 25 Dec 1944

RECEIVED JAMAICA 3 FEB 1945

DESPATCHED FROM AN AMERICAN ARMY POST OFFICE (N° 218) WITHIN BURMA, THE ROUTE THIS COVER TOOK TO REACH ITS DESTINATION IS INTERESTING:- FROM BURMA VIA INDIA TO EAST AFRICA (PROBABLY DURBAN), TO GAMBIA (WEST AFRICA), BY AIR FROM THERE BY THE AMERICAN WAR AIRLINE ACROSS TO BRAZIL AND SO TO JAMAICA.

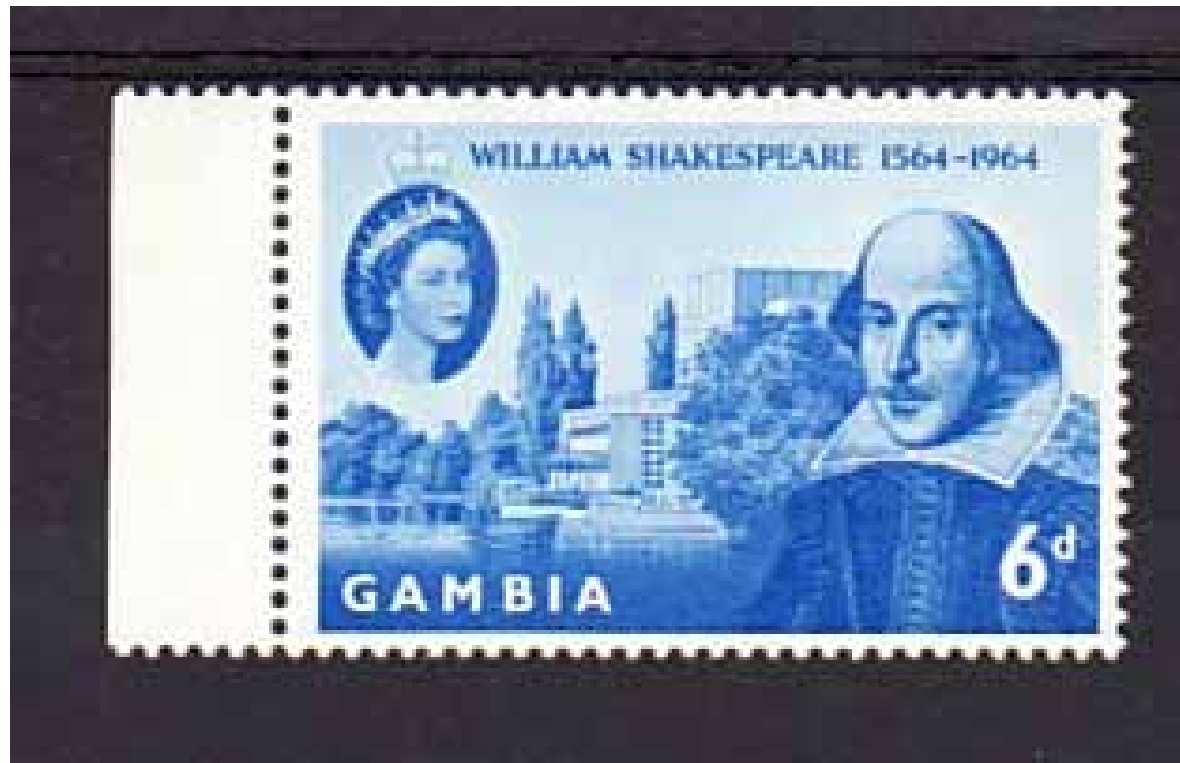
Modern “Opportunities” with Gambia

Gambia’s Rich Cultural Heritage Extends Worldwide
You’ll Be Amazed at Today’s Cultural Icons Closely Associated with Gambia



Modern “Opportunities” with Gambia

Gambia’s Rich Cultural Heritage Extends Worldwide



Modern “Opportunities” with Gambia

Gambia’s Rich Cultural Heritage Extends Worldwide



FRED ASTAIRE & RITA HAYWORTH



Modern “Opportunities” with Gambia

Gambia’s Rich Cultural Heritage Extends Worldwide



Modern “Opportunities” with Gambia

Gambia’s Rich Cultural Heritage Extends Worldwide



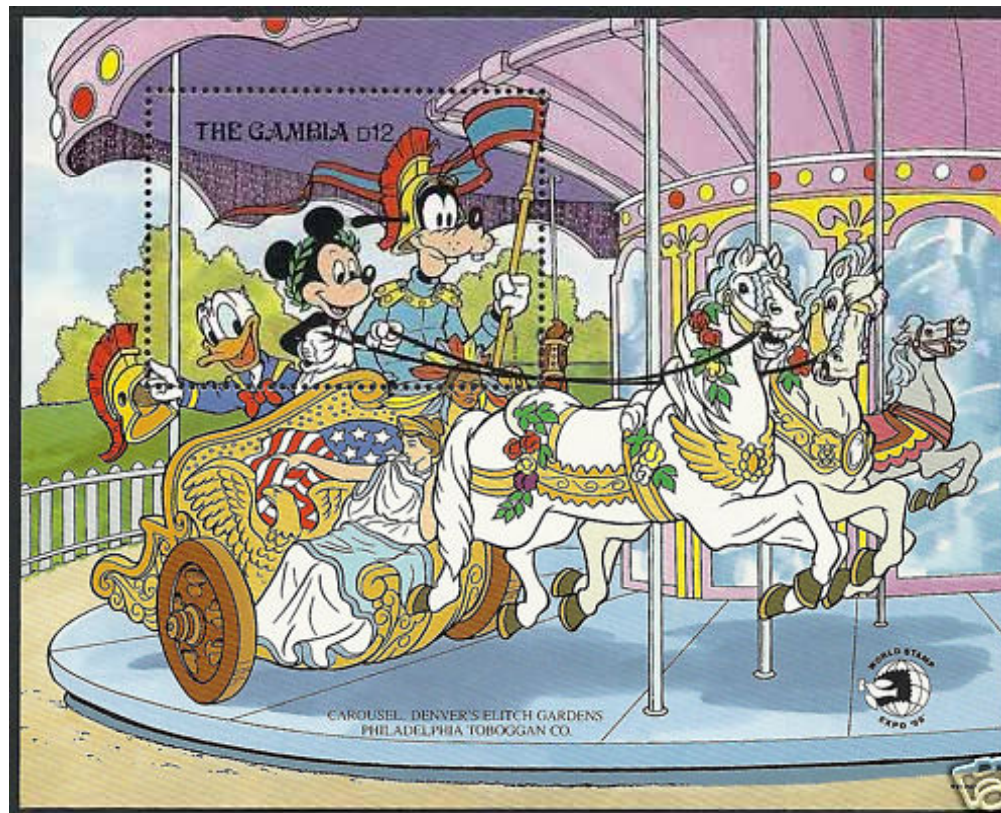
Modern “Opportunities” with Gambia

Gambia’s Rich Cultural Heritage Extends Worldwide



Modern “Opportunities” with Gambia

Gambia’s Rich Cultural Heritage Extends Worldwide



PHILATELIC OPPORTUNITIES WITH GAMBIA



Thank You – Thank You – Thank You

